

TELL ME MORE[®] Education Online Student Starting Guide

Technical Requirements

Please note the following technical requirements:

Windows 98/2000/NT/XP/2003

- High Speed Internet connection
- Internet Explorer 5.5 or higher
- Netscape 6.2 or higher
- Flash 6.0 or higher
- Cookies, JavaScript, and Java Enabled
- Processor - Pentium-class or higher
- RAM - 64 MB (128 MB recommended)
- Display settings - 800x600 resolution
(1024x768 strongly recommended) at thousands of colors
- 16 bit sound card
- Mouse
- Speaker or headphones
- Adobe[®] Reader[®] 5.0 or higher
- Windows Media Player 8 or higher



Accessing Your Learning Program

Step 1: Logging into your account

Point your browser to www.tellmemoreeducation.com, and click on the "For Students" link to the left.



Step 2: Speech recognition

First-time users are required to install the Auralog speech recognition components prior to signing in. To start the download, please click on the appropriate link

or

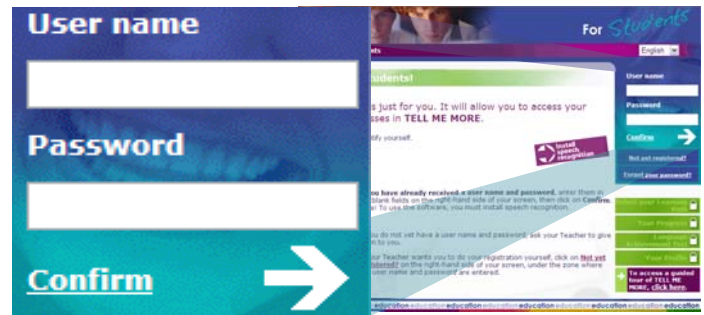
If you have installed the components previously, proceed to step 3.



Step 3: Logging In

To log in, please enter your username and password (provided to you by your instructor or IT administrator) into the appropriate fields on the right hand side of the screen.

Note: Should you not have your log in information, please contact your instructor.



Step 4: Selecting your level

Once logged in, first time users are required to select their starting level.

Student information

Language in which instructions will be given in TELL ME MORE:

Level:

Your contact information

Surname:
First name:
Email:

User name and password

User name:
Password:
Confirm password:

Subject information

Language in which repetitions will be given in TELL ME MORE:
Level:
Lesson language:

Accessing Your Learning Program

Launching your language program:

In order to launch your language program, please click the 'Begin' button next to the appropriate lesson.

Select your Learning Path

To access TELL ME MORE, choose the Learning Path indicated by your Teacher and click on it. If you would like to see a description of a Learning Path, click on its title.

Recommend that you install speech recognition by [clicking here](#).

on language

ning Path Index

	Completed	Correct	
1: Presentarse / Saludar...	0 %	0 %	Begin
1: Edades y descripción (1)	0 %	0 %	Begin
1: Edades y descripción (2)	0 %	0 %	Begin
1: Ropa y complementos	0 %	0 %	Begin
1: Familia y entorno	0 %	0 %	Begin
1: Países y ciudades	0 %	0 %	Begin
1: Orientación estándar	0 %	0 %	Begin

starting
Disconnect →
→ Select your Learning Path
→ Your Progress
→ Language Achievement Test
→ Your Profile
→ To access a guided tour of TELL ME MORE, click here.

The launch and solution screens:

Launching TELL ME MORE ONLINE

The launching of TELL ME MORE ONLINE is in progress. If this is the first time you are connecting, this step may take a few minutes. Thank you for your patience.

- ✓ Preparation of your training plan 100%
- ✓ Loading your language unit 100%
- ✓ Verification of your work station 100%
- ✓ Starting TELL ME MORE ONLINE 100%

Cancel

Path selected

Nivel 1: Presentarse / Saludar... 0%

Units

Presentarse

Saludar

Hablar del origen de alguien

Hablar de gustos

Situarse en el espacio

Situarse en el tiempo

Expresar sentimientos

Formular hipótesis

Expresar sorpresa

Hablar de una situación pasada

Dar órdenes y consejos

Planear un problema

Expresar la voluntad

Fill-in-the-Blanks
Completed: 0% Correct: 0%

Following are key features of your learning program

Key Features of Your Learning Program

Selecting your Learning Path:

Here you can select all your learning paths, as described before.

Guided Tour:

At any time you can access a guides tour.

Nivel 1: Presentarse / Saludar...	0 %	0 %	Begin
Nivel 1: Edades y descripción física (1)	0 %	0 %	Begin
Nivel 1: Edades y descripción física (2)	0 %	0 %	Begin
Nivel 1: Ropa y complementos	0 %	0 %	Begin
Nivel 1: Familia y entorno	0 %	0 %	Begin
Nivel 1: Países y ciudades	0 %	0 %	Begin
Nivel 1: Orientación estándar	0 %	0 %	Begin

Select your Learning Path

Your Progress

Language Achievement Test

Your Profile

→ To access a guided tour of TELL ME MORE, [click here](#).

→ To access a guided tour of TELL ME MORE, [click here](#).

Your Progress:

Here you can test your progress with the progress test.

- Lesson language

Spanish



1 You can compare your level at the beginning and end of your training thanks to **two language tests**.

2 If you have not taken the Placement Test, [click here](#) to take the test now.

→ Select your Learning Path

→ Your Progress

→ Language Achievement Test

→ Your Profile

→ To access a guided tour of TELL ME MORE, [click here](#).

Language Achievement Test:

Here the students access the Language Achievement Test and can also review previous performance on the test.

- Lesson language

Spanish

The **Language Achievement Test** takes approximately 90 minutes and will evaluate your level.



This test is not mandatory and can be taken only once. We recommend that you take it at the end of the academic year. To take the test, [click here](#).

→ Select your Learning Path

→ Your Progress

→ Language Achievement Test

→ Your Profile

→ To access a guided tour of TELL ME MORE, [click here](#).

Your Profile:

Here students can update their personal information and also change their username, passwords, as well as their level.

Your Profile

This page allows you to **modify your profile** (unless it appears in red). To access the other directories, you must confirm this page.

Your contact information

Surname: Louisoder
 First name: Sebastian
 Email: educationusa@auratog.com

User name and password

User name: demomkt
 Password: ●●●
 Confirm password: ●●●

Student information

Language in which instructions will be given in TELL ME MORE: English
 Level: Level 1

Lesson language

Class
 Spanish
 American English

Confirm

Select your Learning Path

Your Progress

Language Achievement Test

→ Your Profile

→ To access a guided tour of TELL ME MORE, [click here](#).

Troubleshooting

Microphone:

Check microphone using Microsoft's sound recorder

START > ALL PROGRAMS > ACCESSORIES > ENTERTAINMENT > SOUND RECORDER

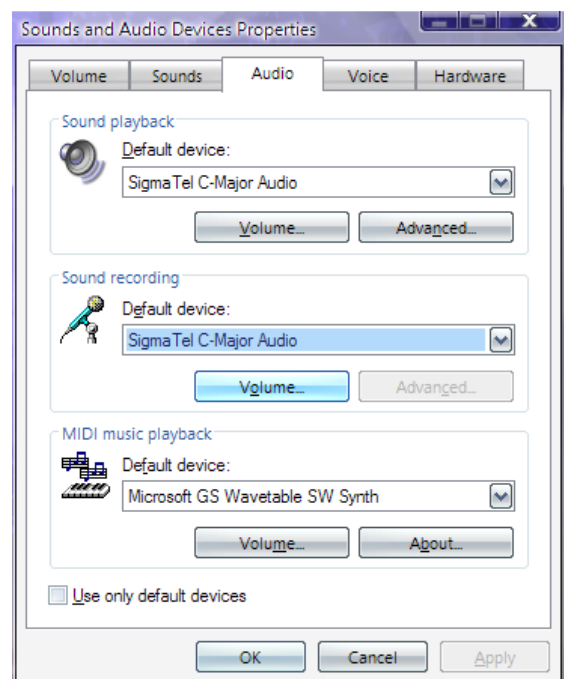
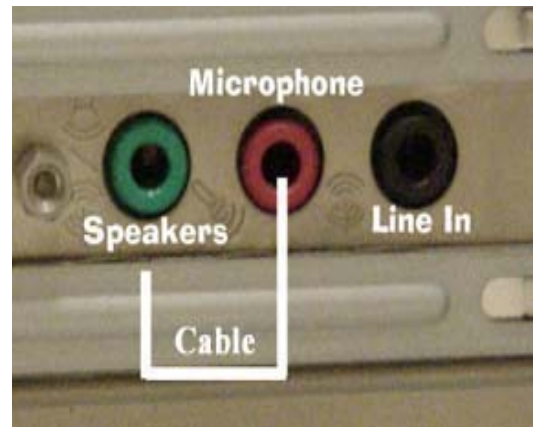
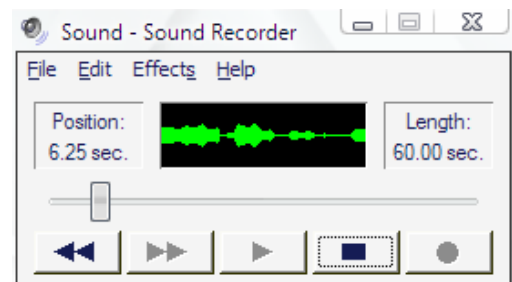
Click on red record button and speak into microphone. The green line should change wavelengths as it picks up sound.

If the green line remains unchanged as you speak into the microphone you need to check and make sure you are plugged into the correct microphone input on your computer. Sometimes, it may look like it is plugged in but it is not completely plugged in. Firmly push it into its input. Below are a few examples of a typical microphone input. Notice the microphone icon to the left of the input to help you identify the correct one.

If you still can not record sound with the Microsoft sound recorder, check your sound settings in the control panel to ensure the microphone is not muted. To do this, click on

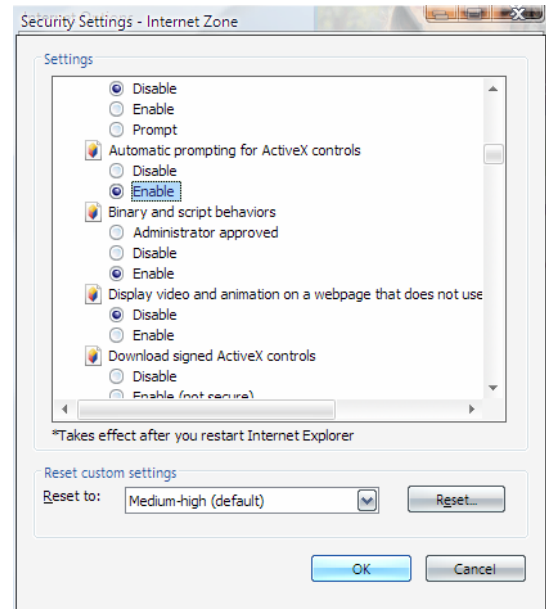
START > SETTINGS > CONTROL PANEL > SOUNDS AND AUDIO DEVICES

Depending on your audio card, your screen may appear different. What you are looking for is the sound recording settings. On this screenshot, I can find it on either the 'AUDIO' tab or the 'VOICE' tab.



Troubleshooting

4. Enable "Automatic prompting for ActiveX controls"



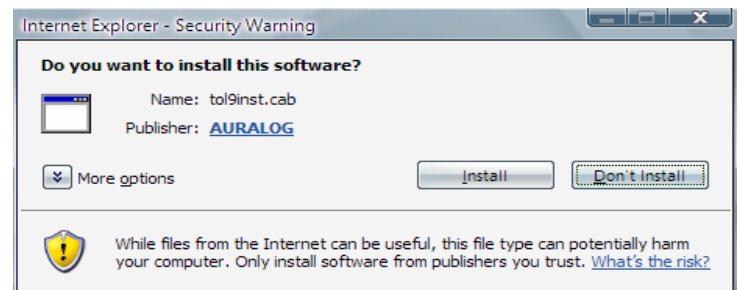
5. Click on *OK* button

6. Click *Apply*

7. Click *OK*

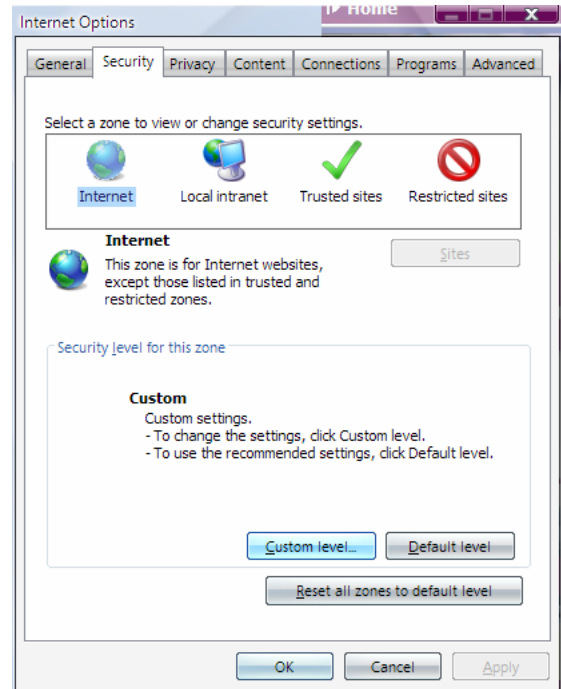
8. Restart the computer test.

9. You should now be prompted with a pop up similar to this. Click *Install*

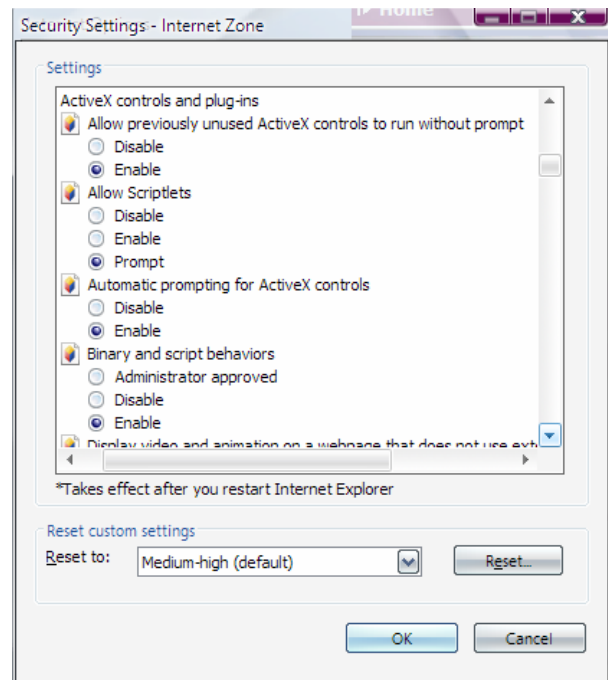


Troubleshooting

2. Click on *Security* Tab and then *Custom Level* button



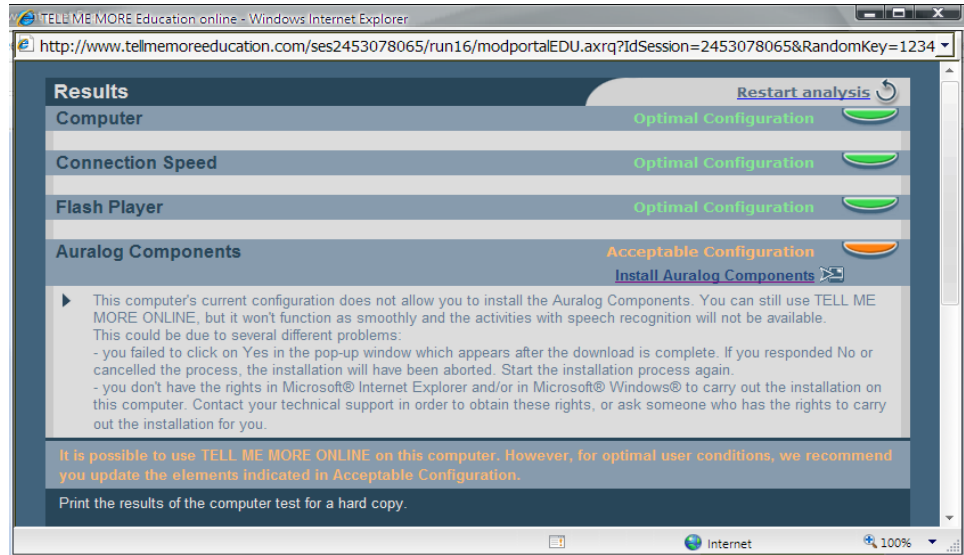
3. Enable *“Allow previously unused ActiveX controls to run without prompt”*



Troubleshooting

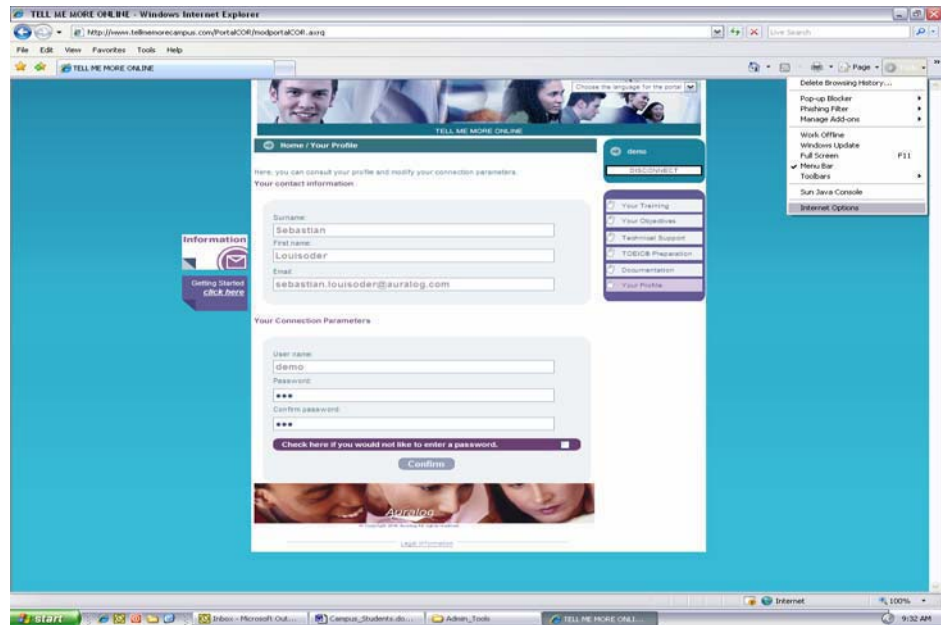
IE 7 Configuration

The following error occurs when trying to install the components:



To solve:

1. Click on Tools>Internet Options



Troubleshooting

Pop-up Blockers:

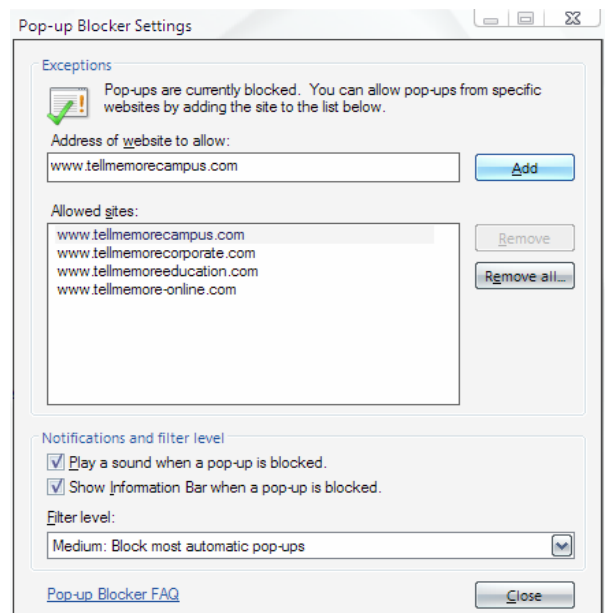
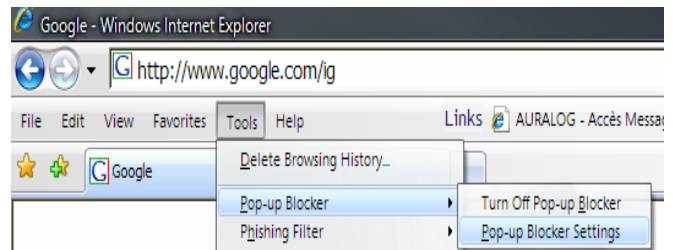
There are a lot of toolbars out there that block unwanted pop-ups. Tell Me More™ software creates *wanted* pop-ups which can not be blocked. So you must disable your pop-up blockers. Holding down the CTRL key temporarily disables some pop-up blockers but is not a sufficient solution. It is also very common to have more than one pop up blocker installed on your browser. Be certain all pop-up blockers are configured to allow the tell me more website to have pop-ups or disable the pop-up blocker all together.

EXAMPLE:

If you have installed Windows Internet explorer service pack 2, you have a pop up blocker installed by default. In order to turn this off, you simply open internet explorer and click on:

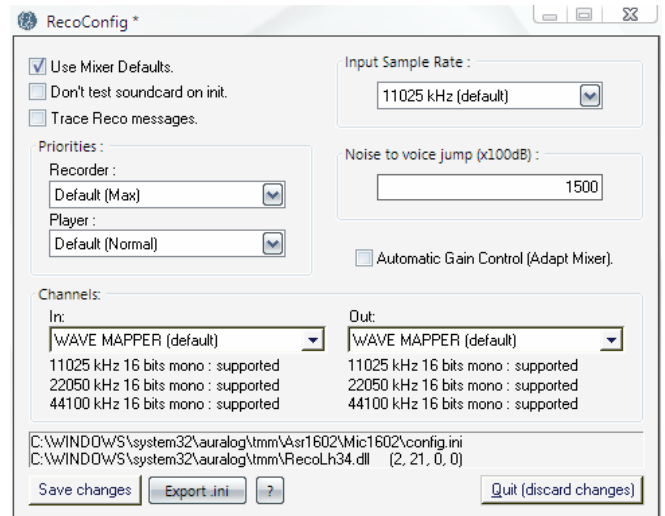
TOOLS>POP-UP BLOCKER>TURN OFF POP-UP BLOCKER

You can select '*Pop-up Blocker Settings*' and add the website as a site allowed to have pop-ups.



Troubleshooting

Double click on the **RecoConfig.exe** program and select the checkbox, 'Use Mixer Defaults.' Then click on the **Save changes** button on the bottom left corner of this screen.



Black Screen:

TIP: MUST BE DONE WITH ADMINISTRATIVE PRIVILEGES!!

At the moment, adobe tries to install the Yahoo toolbar as well which may cause some [pop-up blocker problems](#). Be sure to uncheck the box that says install yahoo toolbar!

Click on the **Install Now** button.

After installation, log back into Tell Me More™

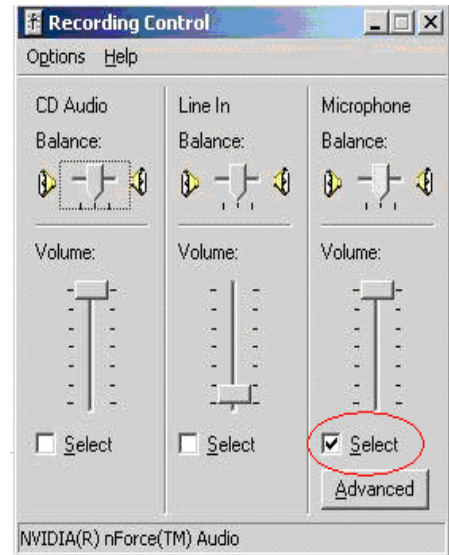
When the program starts up, you get a black or blank screen. The best way to fix this is to re-install flash. The easiest way to reinstall flash is to goto the following website and look for the 'Get Adobe Flash Player' link as seen below:

<http://www.adobe.com>



Troubleshooting

If you click on the volume button for the sound recorder the following screen should appear. This is the screen you are looking for to verify microphone settings and the little checkbox is selected below the volume settings.

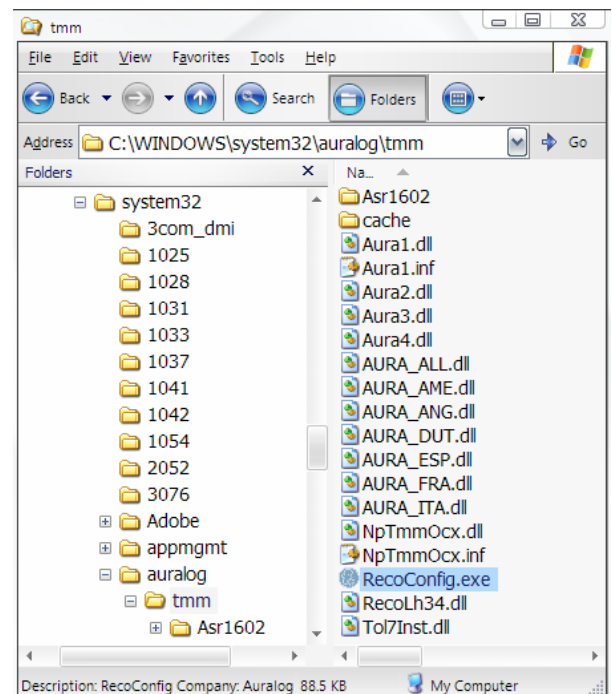


Component Installation:

TIP: MUST BE DONE WITH ADMINISTRATIVE PRIVILEGES!!

If the components are stuck in what seems to be a loop, it may be because you have a sound card with multiple inputs such as the ones found in Microsoft's Windows Media Center operating system. The components are actually installed but the software does not know which input to use. To fix this, right click on your **START** button and click on **EXPLORE**.

Navigate to the following directory:



Troubleshooting

The components should now show they are installing:

